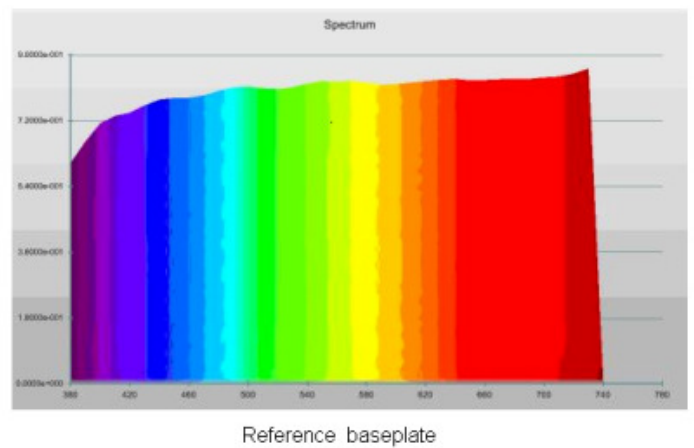
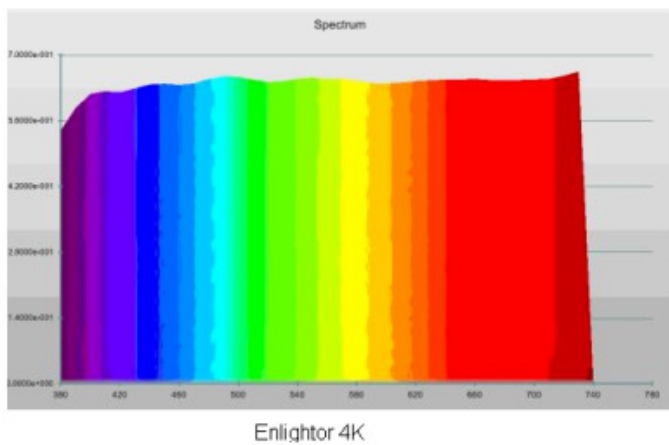


Projection gain vs. viewing angle



Spectral response

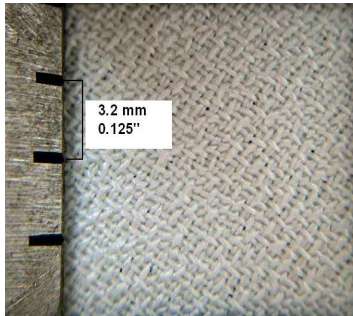
Other features

- Gain White screen[□]: 0.98
- Flame-Retardant (US)*
- M1 (F, S, I)*
- B1 (Germany)*
- Thickness[□]: 0.4 mm
- Weight[□]: 210 g/sq.m

Important notice: available only with **fixed-frame screens**

*(option)

ENLIGHTOR 4K



Meeting the most recent needs of **digital projection** up to **4K resolution (4096x 2160)**, *Enlightor 4K* uses a unique **weave** developed for its specific high **resolution** application.

Its design eliminates any [moiré](#) effect whatever the **screen** size and provides a resolution limit far beyond any existing **projector**.

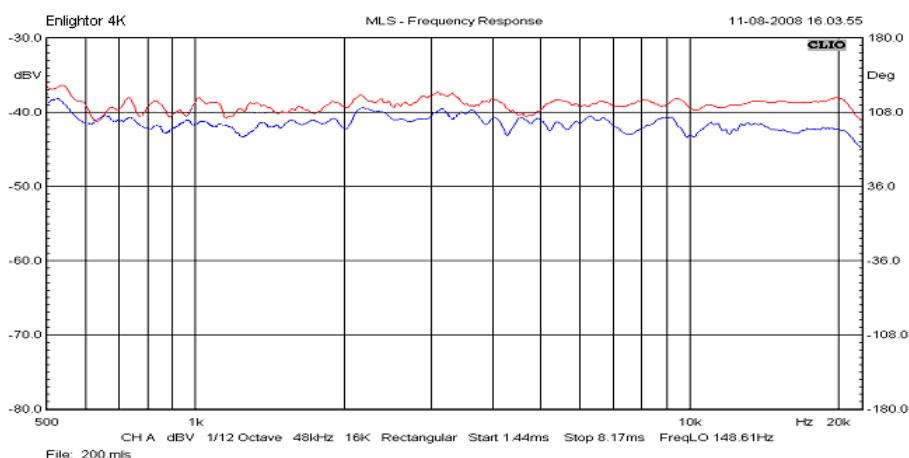
- **Video**

Enlightor 4K is the ultimate neutral projection surface, providing an absolute whiteness. It also presents a negligible gain loss when compared to perforated screens. Its total absence of visible structure equals the best existing solid screen materials. In terms of video imaging quality, the *Enlightor 4K* sets a benchmark.

- **Audio**

Enlightor 4K acoustic transparency differs from any other AT screen fabric : It provides a uniform attenuation of **-2.5 dB** over the whole frequency spectrum, hence allowing to simply reajust volume level on the front channels without any type of EQ.

Specifications



Acoustic response comparing *Enlightor 4K* screen, combined with its black backing layer (shown in blue) with the reference speaker's direct output (shown in red).

Note even response and quasi-constant attenuation at all frequencies